



## TECH MASTER GPP410 SERIES

### 4.5 Purity Single Stage Brass Barstock Diaphragm Outlet Point Regulator - Acetylene

Tech Master GPP410 Series single stage diaphragm outlet point regulators are designed for secondary pressure gas control of technical grade Acetylene gas upto 4.5 purity (99.995%), on gas distribution systems.

- **GPP410 Series** | Single Stage Diaphragm Outlet Point Regulator - Acetylene



### FEATURES

- Three port configuration
- Rear point mounting (1/4 NPT male)
- Encapsulated seat design
- Low wetted surface area
- Full range of outlet fittings
- Rear entry



### MATERIALS

Body	Brass Barstock
Bonnet	High Strength Alloy
Diaphragm	Polychloroprene (Neoprene®) (CR)
Seat	Polyamide (Nylon®)
Filter	10 Micron 316L Stainless Steel



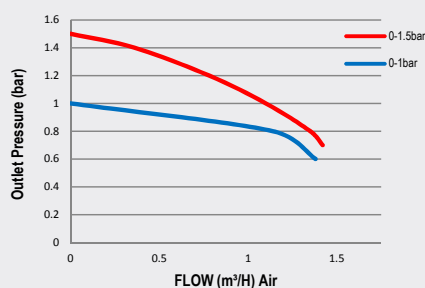
### SPECIFICATION

Maximum Inlet Pressure	25 bar (360 PSI)
Delivery Pressure Range	1 bar (15 PSI) / 1.5 bar (22 PSI)
Gauges	50mm (2") Diameter
Ports	1/4" NPT Female
Temperature Range	-20° C to +60° C (-4° F to +140° F)
Flow Coefficient (Cv)	0.1
Weight	1.1 kg (2.5 lb)



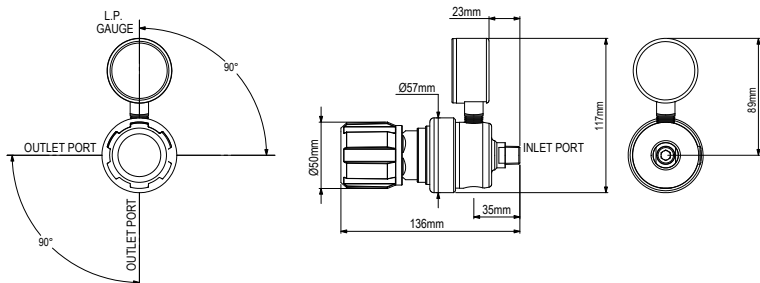
### FLOW PERFORMANCE

1.5 bar inlet pressure @ 21°

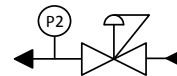




## DIMENSIONS



## PROCESS & INSTRUMENTATION



- Adjustable Pressure Regulator



- P2 Pressure Gauge

### Model No. Selector Guide

Product Type	Inlet Pressure	Outlet Pressure	Inlet Pressure Gauge	Outlet Pressure Gauge	Inlet/Cylinder Connection	Outlet Connection	Options
GPP410	01 25 bar / 360 PSI	01 -1 - 1 bar / 15 PSI	00 No Gauge Fitted	00 No Gauge Fitted	004 1/4 NPT Male	00 No Outlet	A No Options Selected
		02 -1 - 1.5 bar / 22 PSIG		01 bar/PSI		01 1/8 Stainless Steel Compression	K Certificate of Conformity
						02 1/4 Stainless Steel Compression	L Panel Mount Locking Nut Kit
						03 6mm Stainless Steel Compression	P Calibration / Pressure Test Certificate
						04 1/4 NPT Male	X Special Instruction
						05 1/4 SAE Flare Brass Male	
						08 G3/8 BSP L/H Brass Male	
						10 Isolation Valve, 1/4 NPT Female, EPDM Seal	
						12 Isolation Valve, 1/8 Stainless Steel Compression, EPDM Seal	
						14 Isolation Valve, 1/4 Stainless Steel Compression, EPDM Seal	
						16 Isolation Valve, 6mm Stainless Steel Compression, EPDM Seal	
						18 Isolation Valve, 1/4 NPT Male, EPDM Seal	
						22 Isolation Valve, G3/8 BSP L/H Brass Male, EPDM Seal	