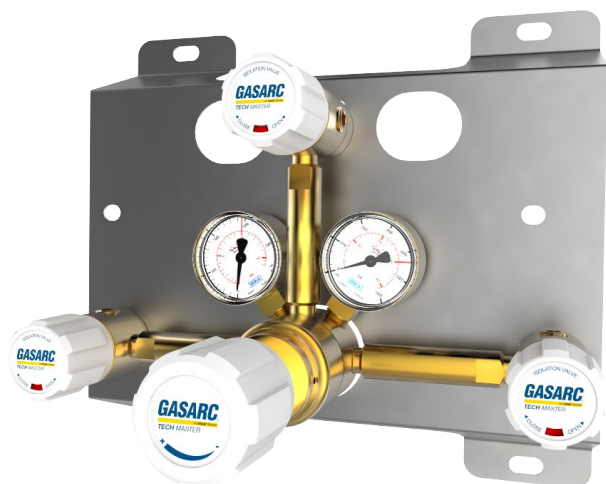


TECH MASTER GPM4200 SERIES

4.5 Purity Single Stage Brass Barstock Piston Manual Change Gas Control Panel

The Tech Master GPM4200 series single stage manual change control panels are designed for primary pressure gas control of non-corrosive or toxic, technical gases up to grade 4.5 purity (99.995%), on gas distribution systems where slight pressure variation is acceptable.

- **GPM4211 Series** | Single Stage Single Cylinder Piston Manual Gas Change Control Panel, FKM Seal
- **GPM4212 Series** | Single Stage Single Cylinder Piston Manual Gas Change Control Panel, EPDM Seal
- **GPM4231 Series** | Single Stage Twin Cylinder Piston Manual Gas Change Control Panel, FKM Seal
- **GPM4232 Series** | Single Stage Twin Cylinder Piston Manual Gas Change Control Panel, EPDM Seal



★ FEATURES

- High pressure isolation valves
- Single stage pressure regulation
- Process line isolation valve
- Encapsulated seat design
- Single and twin cylinder configuration

📄 MATERIALS

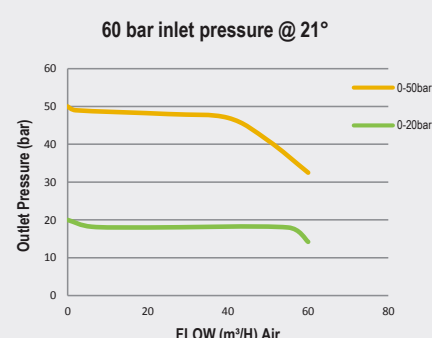
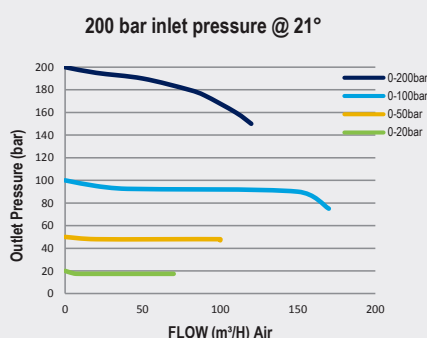
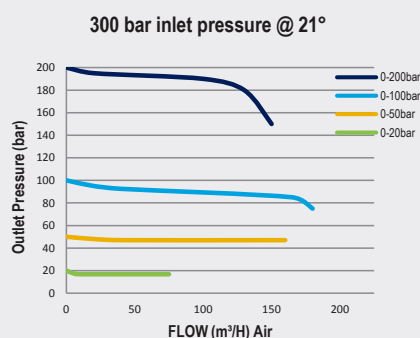
| | |
|--------|--------------------------------|
| Body | Brass Barstock |
| Bonnet | Brass Barstock |
| Piston | Brass |
| Seal | FKM / EPDM |
| Seat | Polyamide (Nylon®) |
| Filter | 10 Micron 316L Stainless Steel |

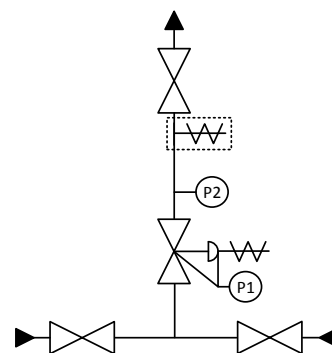
👍 SPECIFICATION






| | |
|-------------------------|---|
| Maximum Inlet Pressure | 60 bar (870 PSI) / 300 bar (4350 PSI)* |
| Delivery Pressure Range | 20 bar (300 PSI) / 50 bar (725 PSI) / 100 bar (1450 PSI) / 200 bar (2900 PSI) |
| Gauge | 50mm (2") Diameter |
| Ports | 1/4" NPT Female |
| Temperature Range | -20° C to +60° C (-4° F to +140° F) |
| Flow Coefficient (Cv) | 0.1 |
| Weight | 5.00kg (11.02 lbs)**** |

* Subject to cylinder connection. **** Subject to final configuration.

✓ FLOW PERFORMANCE





-  - Isolation Valve
  - P2 Pressure Gauge
-  - Adjustable Pressure Regulator with P1 Pressure Gauge and Pressure Relief Valve
  - Pressure Relief Valve
-  - Denotes a Configurable Option

[illegible]