

CHEM MASTER SGM6200 SERIES

6.0 Purity Two Stage Stainless Steel Piston Manual Change Gas Control Panel

The Chem Master SGM6200 series two stage manual change control panels are designed for primary pressure gas control of corrosive, toxic or high purity gases up to grade 6.0 purity (99.9999%), on gas distribution systems where constant delivery pressure is required.

- **SGM6221 Series** | Two Stage Single Cylinder Piston Manual Gas Change Control Panel, FKM Seal
- **SGM6222 Series** | Two Stage Single Cylinder Piston Manual Gas Change Control Panel, EPDM Seal
- **SGM6241 Series** | Two Stage Twin Cylinder Piston Manual Gas Change Control Panel, FKM Seal
- **SGM6242 Series** | Two Stage Twin Cylinder Piston Manual Gas Change Control Panel, EPDM Seal



★ FEATURES

- High pressure isolation valves
- High pressure purge facility
- Two stage pressure regulation
- Process line isolation valve
- Encapsulated seat design
- Single and twin cylinder configuration

📄 MATERIALS

Body	316L Stainless Steel
Bonnet	Nickel Plated Brass Barstock
Piston	316L Stainless Steel
Seal	FKM / EPDM
Seat	PCTFE
Filter	10 Micron 316L Stainless Steel

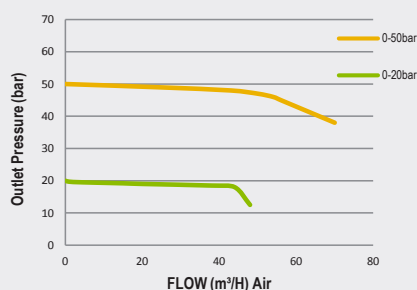
👍 SPECIFICATION

Maximum Inlet Pressure	60 bar (870 PSI) / 300 bar (4350 PSI)*
Delivery Pressure Range	20 bar (300 PSI) / 50 bar (725 PSI)
Gauge	50mm (2") Diameter
Ports	1/4" NPT Female
Temperature Range	-20° C to +60° C (-4° F to +140° F)
Flow Coefficient (Cv)	0.078
Helium Leak Integrity	1x10 ⁻⁹ mbar l/s
Weight	5.0kg (11.02 lbs)****

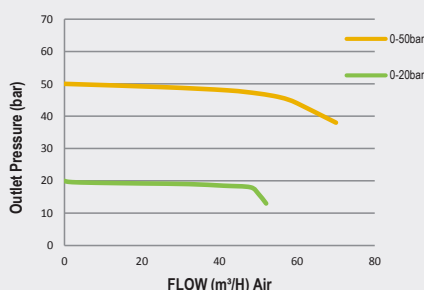
** Cylinder connection not included *** 3.1 material certificates available on extended lead times, contact the sales office for further information. **** Subject to final configuration.

✓ FLOW PERFORMANCE

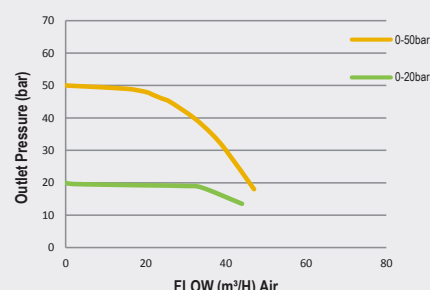
300 bar inlet pressure @ 21°

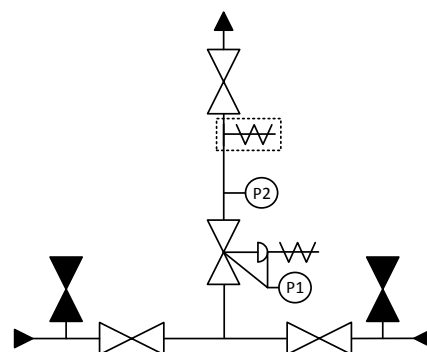



200 bar inlet pressure @ 21°



60 bar inlet pressure @ 21°





-  - Isolation Valve
  - Isolation Valve (Closed)
  - Adjustable Pressure Regulator with P1 Pressure Gauge and Pressure Relief Valve
  - P2 Pressure Gauge
  - Pressure Relief Valve
  - Denotes a Configurable Option

[illegible]