

CHEM MASTER SGM6000 SERIES

6.0 Purity Single Stage Stainless Steel Diaphragm Manual Change Gas Control Panel

The Chem Master SGM6000 series single stage manual change control panels are designed for primary pressure gas control of corrosive, toxic or high purity gases up to grade 6.0 purity (99.9999%), on gas distribution systems where slight pressure variation is acceptable.

- **SGM6011 Series** | Single Stage Single Cylinder Diaphragm Manual Gas Change Control Panel, FKM Seal, FFKM Pressure Relief Valve
- **SGM6012 Series** | Single Stage Single Cylinder Diaphragm Manual Gas Change Control Panel, EPDM Seal, FFKM Pressure Relief Valve
- **SGM6031 Series** | Single Stage Twin Cylinder Diaphragm Manual Gas Change Control Panel, FKM Seal, FFKM Pressure Relief Valve
- **SGM6032 Series** | Single Stage Twin Cylinder Diaphragm Manual Gas Change Control Panel, EPDM Seal, FFKM Pressure Relief Valve



★ FEATURES

- High pressure isolation valves
- High pressure purge facility
- Single stage pressure regulation
- Process line isolation valve
- Encapsulated seat design
- Single and twin cylinder configuration

✎ MATERIALS

Body	316L Stainless Steel
Bonnet	Nickel Plated Brass Barstock
Diaphragm	316L Stainless Steel
Seal	PTFE
Seat	PCTFE
Filter	10 Micron 316L Stainless Steel

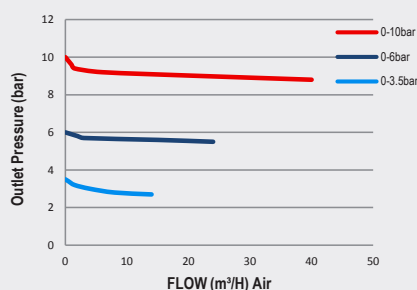
👍 SPECIFICATION

Maximum Inlet Pressure	60 bar (870 PSI) / 300 bar (4350 PSI)*
Delivery Pressure Range	3.5 bar (50 PSI) / 6 bar (90 PSI) / 10 bar (150 PSI)
Gauge	50mm (2") Diameter
Ports	1/4" NPT Female
Temperature Range	-20° C to +60° C (-4° F to +140° F)
Flow Coefficient (Cv)	0.1
Helium Leak Integrity	1x10 ⁻⁹ mbar l/s
Weight	5.0kg (11.02 lbs)****

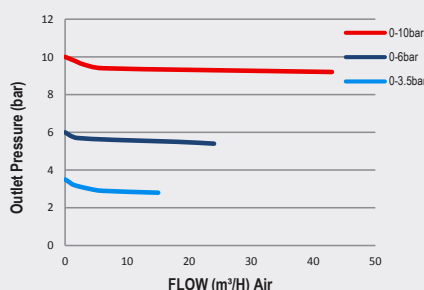
* Subject to cylinder connection. *** 3.1 material certificates available on extended lead times, contact the sales office for further information. **** Subject to final configuration.

✓ FLOW PERFORMANCE

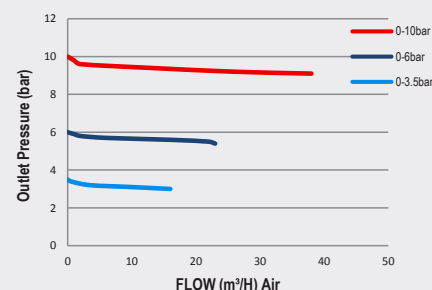
300 bar inlet pressure @ 21°

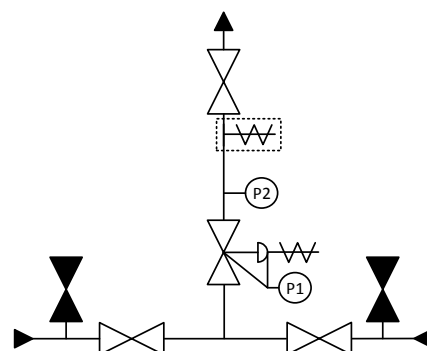








200 bar inlet pressure @ 21°



60 bar inlet pressure @ 21°





-  - Isolation Valve
  - Isolation Valve (Closed)
  - Adjustable Pressure Regulator with P1 Pressure Gauge and Pressure Relief Valve
  - P2 Pressure Gauge
  - Pressure Relief Valve
  - Denotes a Configurable Option

[illegible]