



TECH MASTER GPL420 SERIES

4.5 Purity Single Stage Brass Barstock High Pressure Piston Line Regulators

Tech Master GPL420 series single stage piston line regulators are designed for secondary pressure gas control of non-corrosive or toxic, technical grade gases up to grade 4.5 purity (99.995%), on gas distribution systems.

- **GPL421 Series** | Single Stage Piston Line Regulator, FKM Seal
- **GPL422 Series** | Single Stage Piston Line Regulator, EPDM Seal

★ FEATURES

- Four port configuration
- Front & rear panel mounting capabilities
- Encapsulated seat design
- Low wetted surface area
- Full range of inlet and outlet fittings
- Side entry

📄 MATERIALS

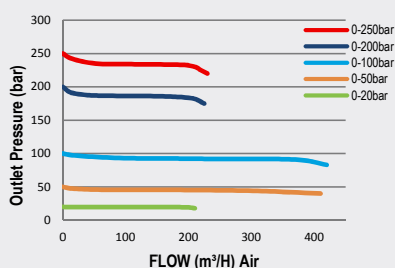
Body	Brass Barstock
Bonnet	Brass Barstock
Piston	Brass
Seal	FKM / EPDM
Seat	Polyamide (Nylon®)
Filter	10 Micron 316L Stainless Steel

👍 SPECIFICATION

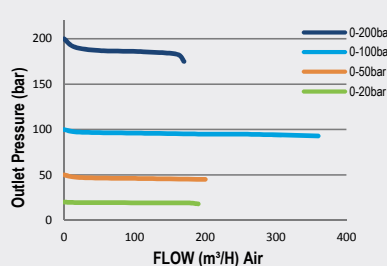
Maximum Inlet Pressure	300 bar (4350 PSI)
Delivery Pressure Range	20 bar (300 PSI) / 50 bar (725 PSI) / 100 bar (1450 PSI) / 200 bar (2900 PSI) / 250 bar (3630 PSI)
Gauges	50mm (2") Diameter
Ports	1/4" NPT Female
Temperature Range	-20° C to +60° C (-4° F to +140° F)
Flow Coefficient (Cv)	0.1
Weight	1.4 kg (3.1 lb)

✓ FLOW PERFORMANCE

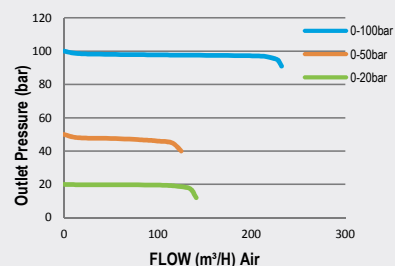
300 bar Inlet Pressure @ 21°C

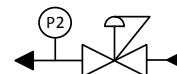


200 bar Inlet Pressure @ 21°C



100 bar Inlet Pressure @ 21°C





P2

- P2 Pressure Gauge