



## TECH MASTER GPS410 SERIES

### 4.5 Purity Single Stage Brass Barstock Diaphragm Cylinder Regulator - Acetylene

Tech Master GPS410 series single stage diaphragm cylinder regulators are designed for primary pressure gas control of technical grade Acetylene gas up to 4.5 purity (99.995%), on applications where slight pressure variation from decreasing cylinder pressure is acceptable.

- **GPS410 Series** | Single Stage Diaphragm Cylinder Regulator, EPDM Pressure Relief Valve - Acetylene



### FEATURES

- Five port configuration
- Rear panel mounting capabilities
- Encapsulated seat design
- Low wetted surface area
- Full range of inlet and outlet fittings
- Base and side entry



### MATERIALS

Body	Brass Barstock
Bonnet	High Strength Alloy
Diaphragm	Polychloroprene (Neoprene®) (CR)
Seat	Polyamide (Nylon®)
Filter	10 Micron 316L Stainless Steel

\*\* Cylinder connection not included

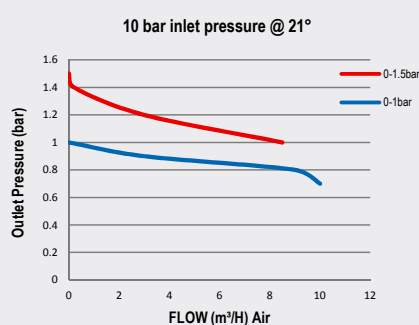
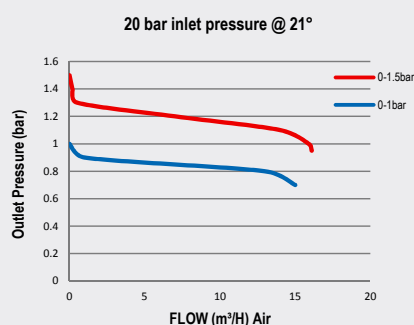


### SPECIFICATION

Maximum Inlet Pressure	25 bar (360 PSI)
Delivery Pressure Range	1 bar (15 PSI) / 1.5 bar (22 PSI)
Gauges	50mm (2") Diameter
Ports	1/4" NPT Female
Temperature Range	-20° C to +60° C (-4° F to +140° F)
Flow Coefficient (Cv)	0.1
Weight	1.2 kg (2.7 lb)**

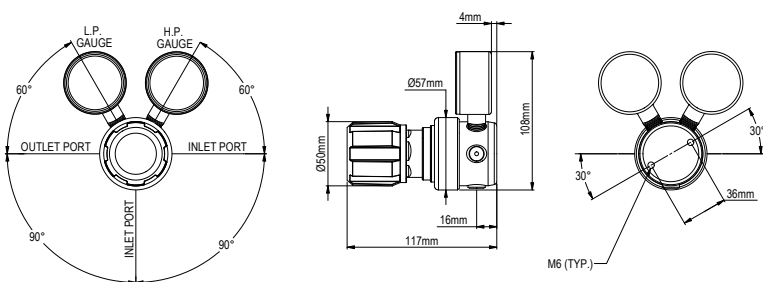


### FLOW PERFORMANCE

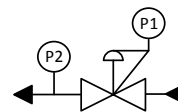




## DIMENSIONS



## PROCESS & INSTRUMENTATION



- Adjustable Pressure Regulator with P1 Pressure Gauge



- P2 Pressure Gauge

### Model No. Selector Guide

Product Type	Inlet Pressure	Outlet Pressure	Inlet Pressure Gauge	Outlet Pressure Gauge	Inlet/Cylinder Connection	Outlet Connection	Options
GPS410	01 25 bar / 360 PSI	01 -1 - 1 bar / 15 PSI	00 No Gauge Fitted	00 No Gauge Fitted	000 No Inlet	00 No Outlet	A No Options Selected
		02 1 - 1.5 bar / 22 PSI	01 bar/PSI	01 bar/PSI	001 1/8 Stainless Steel Compression	01 1/8 Stainless Steel Compression	K Certificate of Conformity
					002 1/4 Stainless Steel Compression	02 1/4 Stainless Steel Compression	L Panel Mount Locking Nut Kit
					003 6mm Stainless Steel Compression	03 6mm Stainless Steel Compression	P Calibration / Pressure Test Certificate
					004 1/4 NPT Male	04 1/4 NPT Male	X Special Instruction
					008 G3/8 BSP L/H Brass Male	05 1/4 SAE Flare Brass Male	
					011 BS341 No.4 (Base Entry)	08 G3/8 BSP L/H Brass Male	
					012 BS341 No.4	10 Isolation Valve, 1/4 NPT Female, EPDM Seal	
					027 DIN477 No.3	12 Isolation Valve, 1/8 Stainless Steel Compression, EPDM Seal	
					028 DIN447 No.3.1	14 Isolation Valve, 1/4 Stainless Steel Compression, EPDM Seal	
					050 CGA510	16 Isolation Valve, 6mm Stainless Steel Compression, EPDM Seal	
						18 Isolation Valve, 1/4 NPT Male, EPDM seal	
						22 Isolation Valve, G3/8 BSP L/H Brass Male, EPDM Seal	