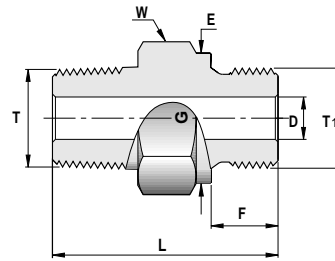
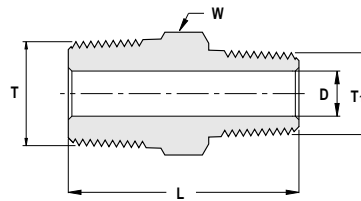


122 HNG  
HEX NIPPLE  
NPT TO BSPP



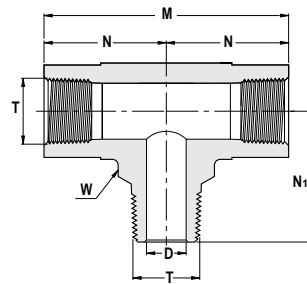
Ordering Information	T Male NPT Size	T1 Male BSPP ISO 228/1, BS 2779	L		F		E		D Min. Opening		W Hex. Flat
			in	mm	in	mm	in	mm	in	mm	in
			122HNG _ 1/8	1/8	1/8-28	1.07	27.2	0.28	7.1	0.54	13.8
122HNG _ 1/4	1/4	1/4-19	1.44	36.3	0.44	11.2	0.71	18.0	0.23	5.8	3/4
122HNG _ 3/8	3/8	3/8-19	1.47	37.3	0.44	11.2	0.85	21.8	0.31	7.9	7/8
122HNG _ 1/2	1/2	1/2-14	1.78	45.2	0.56	14.2	1.02	26.0	0.47	11.9	1 1/16
122HNG _ 3/4	3/4	3/4-14	1.95	49.5	0.62	15.7	1.26	32.0	0.62	15.8	1 5/16
122HNG _ 1	1	1-11	2.26	57.4	0.72	18.3	1.53	39.0	0.78	19.8	1 5/8

123 H  
REDUCING NIPPLE



Ordering Information	T Male NPT Size	T1 Male NPT Size	L		D Min. Opening		W Hex. Flat
			in	mm	in	mm	in
			123H _ 1/8 X 1/16	1/8	1/16	1.01	25.7
123H _ 1/4 X 1/8	1/4	1/8	1.22	31.0	0.19	4.8	9/16
123H _ 3/8 X 1/8	3/8	1/8	1.25	31.8	0.19	4.8	11/16
123H _ 3/8 X 1/4	3/8	1/4	1.43	36.3	0.28	7.1	11/16
123H _ 1/2 X 1/8	1/2	1/8	1.47	37.3	0.19	4.8	7/8
123H _ 1/2 X 1/4	1/2	1/4	1.65	41.9	0.28	7.1	7/8
123H _ 1/2 X 3/8	1/2	3/8	1.65	41.9	0.38	9.6	7/8
123H _ 3/4 X 1/4	3/4	1/4	1.65	41.9	0.28	7.1	1 1/16
123H _ 3/4 X 1/2	3/4	1/2	1.84	46.7	0.47	11.9	1 1/16
123H _ 1X 1/2	1	1/2	2.13	54.1	0.47	11.9	1 3/8
123H _ 1X 3/4	1	3/4	2.13	54.1	0.62	15.8	1 3/8

3600 H  
BRANCH TEE



Ordering Information	T Male & Female NPT	M		N		N1		D Min. Opening		W Wrench Flat
		in	mm	in	mm	in	mm	in	mm	in
		3600H _ 1/8	1/8	2.08	52.8	1.04	26.4	0.87	22.1	0.19
3600H _ 1/4	1/4	2.34	59.4	1.17	29.7	1.17	29.7	0.28	7.1	13/16
3600H _ 3/8	3/8	2.68	68.1	1.42	36.1	1.26	32.0	0.38	9.6	15/16
3600H _ 1/2	1/2	3.12	79.2	1.56	39.6	1.56	39.6	0.47	11.9	1 1/8

● Dimensions are for reference only, and are subject to change without notice.