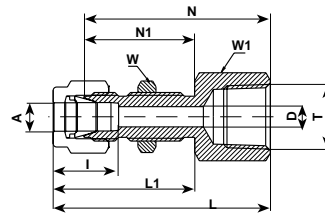


LET-LOK TUBE FITTINGS

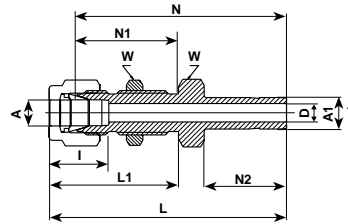
774 LF BULKHEAD FEMALE CONNECTOR



TUBE (INCH) TO FEMALE NPT THREAD

Ordering Information	A		T	D		W		W1		N		N1		L		L1		I		Panel hole drill size		Max. panel thickness	
	Tube O.D.		(NPT)			Hex. Flat		Hex. Flat															
	in	mm	in	in	mm	in	mm	in	mm	in	mm	in	mm	in	mm	in	mm	in	mm	in	mm	in	mm
774LF_1/8X1/8	1/8	3.17	1/8	.09	2.28	9/16	14.3	1/2	12.7	1.50	38.10	.97	24.63	1.76	44.70	1.23	31.24	.50	12.7	21/64	8.33	.50	12.70
774LF_1/4X1/8	1/4	6.35	1/8	.19	4.82	5/8	15.9	5/8	15.9	1.56	39.62	1.03	26.16	1.85	46.99	1.32	33.52	.60	15.2	29/64	11.50	.40	10.16
774LF_1/4X1/4	1/4	6.35	1/4	.19	4.82	3/4	19.1	5/8	15.9	1.75	44.45	1.03	26.16	2.04	51.81	1.32	33.52	.60	15.2	29/64	11.50	.40	10.16
774LF_3/8X1/4	3/8	9.52	1/4	.28	7.11	3/4	19.1	3/4	19.1	1.88	47.75	1.16	29.46	2.17	55.11	1.45	36.83	.66	16.8	37/64	14.68	.44	11.17
774LF_1/2X3/8	1/2	12.70	3/8	.41	10.41	15/16	23.8	15/16	23.8	2.03	51.56	1.25	31.75	2.43	61.72	1.65	41.91	.90	22.9	49/64	19.44	.50	12.70
774LF_1/2X1/2	1/2	12.70	1/2	.41	10.41	1 1/16	27.0	15/16	23.8	2.22	56.38	1.25	31.75	2.62	66.54	1.65	41.91	.90	22.9	49/64	19.44	.50	12.70

774 LT BULKHEAD REDUCER



TUBE (INCH) TO TUBE (INCH)

Ordering Information	A		A1	D		W		N		N1		N2		L		L1		I	
	Tube O.D.		Tube O.D.			Hex. Flat													
	in	mm	in	in	mm	in	mm	in	mm	in	mm	in	mm	in	mm	in	mm	in	mm
774LT_1/8 X 1/8	1/8	3.17	1/8	.08	2.03	1/2	12.7	1.69	42.92	.97	24.63	.53	13.46	1.95	49.53	1.23	31.24	0.5	12.7
774LT_1/4 X 1/4	1/4	6.35	1/4	.17	4.20	5/8	15.9	1.91	48.50	1.03	26.16	.62	15.74	2.20	55.88	1.32	33.52	0.6	15.2
774LT_3/8 X 3/8	3/8	9.52	3/8	.28	7.11	3/4	19.1	2.12	53.85	1.16	29.46	.69	17.52	2.41	61.21	1.45	36.83	0.66	16.8
774LT_1/2 X 1/2	1/2	12.70	1/2	.39	9.90	15/16	23.8	2.47	62.73	1.25	31.75	.91	23.11	2.87	72.89	1.65	41.91	0.9	22.9

• "D" - Dimension is minimum opening. • Dimensions are for reference only, and are subject to change without notice.