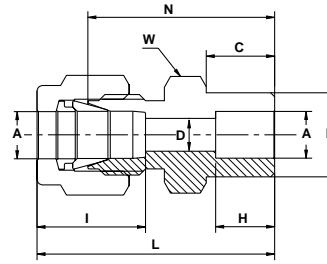


768 LW
TUBE SOCKET WELD UNION



TUBE (INCH)																		
Ordering Information	A		C		D		W		F		H		I		L		N	
	Tube O.D.						Hex. Flat											
	in	mm	in	mm	in	mm	in	mm	in	mm	in	mm	in	mm	in	mm	in	mm
768LW _ 1/8 X 1/8	1/8	3.17	0.34	8.64	0.09	2.28	7/16	11.1	0.31	7.87	0.25	6.35	0.50	12.70	1.14	28.96	0.88	22.35
768LW _ 1/4 X 1/4	1/4	6.35	0.41	10.41	0.19	4.80	1/2	12.7	0.44	11.18	0.31	7.90	0.60	15.20	1.32	33.53	1.03	26.16
768LW _ 3/8 X 3/8	3/8	9.52	0.47	11.94	0.28	7.10	5/8	15.9	0.62	15.75	0.38	9.65	0.66	16.80	1.48	37.60	1.19	30.23
768LW _ 1/2 X 1/2	1/2	12.70	0.47	11.94	0.41	10.40	13/16	20.6	0.75	19.05	0.50	12.70	0.90	22.90	1.62	41.15	1.22	31.00
768LW _ 3/4 X 3/4	3/4	19.05	0.47	11.94	0.62	15.80	1 1/16	27.0	1.05	26.67	0.56	14.20	0.96	24.40	1.71	43.43	1.31	33.28
768LW _ 1 X 1	1	25.40	0.56	14.22	0.88	22.35	1 3/8	34.9	1.31	33.27	0.75	19.05	1.23	31.20	2.07	52.58	1.59	40.40
																	Designation: Marking LW on Hex.	

● "D" - Dimension is minimum opening. ● Dimensions are for reference only, and are subject to change without notice.