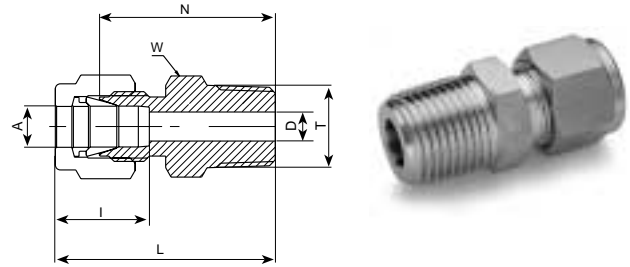


768 LR  
MALE CONNECTOR



**TUBE (METRIC) ISO TAPERED THREAD**

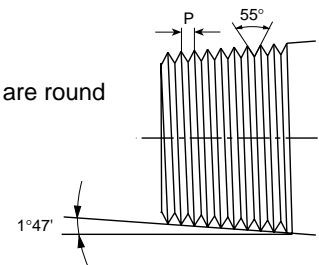
Ordering Information	A	T	D	W	N	L	I
	Tube O.D.	(ISO)		Hex. Flat			
	mm	in	mm	mm	mm	mm	mm
768LR _ 2 X 1/8	2	R-1/8	1.7	12	23.9	30.5	12.9
768LR _ 3 X 1/8	3	R-1/8	2.4	12	23.9	30.5	12.9
768LR _ 3 X 1/4	3	R-1/4	2.4	14	29.0	35.6	12.9
768LR _ 4 X 1/8	4	R-1/8	2.4	12	24.6	31.2	13.7
768LR _ 4 X 1/4	4	R-1/4	2.4	14	29.7	36.3	13.7
768LR _ 6 X 1/8	6	R-1/8	4.8	14	25.4	32.8	15.3
768LR _ 6 X 1/4	6	R-1/4	4.8	14	30.5	37.9	15.3
768LR _ 6 X 3/8	6	R-3/8	4.8	18	31.0	38.4	15.3
768LR _ 6 X 1/2	6	R-1/2	4.8	22	37.3	44.7	15.3
768LR _ 8 X 1/8	8	R-1/8	4.8	15	26.7	34.2	16.2
768LR _ 8 X 1/4	8	R-1/4	6.4	15	31.2	38.7	16.2
768LR _ 8 X 3/8	8	R-3/8	6.4	18	31.8	39.2	16.2
768LR _ 8 X 1/2	8	R-1/2	6.4	22	38.1	45.6	16.2
768LR _ 10 X 1/8	10	R-1/8	4.8	18	28.7	36.3	17.2
768LR _ 10 X 1/4	10	R-1/4	7.9	18	33.3	40.9	17.2
768LR _ 10 X 3/8	10	R-3/8	7.9	18	33.3	40.9	17.2
768LR _ 10 X 1/2	10	R-1/2	7.9	22	38.9	46.5	17.2
768LR _ 12 X 1/4	12	R-1/4	7.1	22	33.3	43.4	22.8
768LR _ 12 X 3/8	12	R-3/8	9.5	22	33.3	43.4	22.8
768LR _ 12 X 1/2	12	R-1/2	9.5	22	38.9	49.0	22.8
768LR _ 12 X 3/4	12	R-3/4	9.5	27	40.4	50.5	22.8
768LR _ 15 X 1/2	15	R-1/2	11.9	24	38.9	49.0	24.4
768LR _ 16 X 1/4	16	R-1/4	7.1	24	34.0	44.1	24.4
768LR _ 16 X 3/8	16	R-3/8	9.5	24	34.0	44.1	24.4
768LR _ 16 X 1/2	16	R-1/2	11.9	24	38.9	49.0	24.4
768LR _ 16 X 3/4	16	R-3/4	12.7	27	40.4	50.5	24.4
768LR _ 18 X 1/2	18	R-1/2	11.9	27	40.4	50.5	24.4
768LR _ 18 X 3/4	18	R-3/4	15.1	27	40.4	50.5	24.4
768LR _ 20 X 1/2	20	R-1/2	11.9	30	42.2	52.3	26.0
768LR _ 20 X 3/4	20	R-3/4	15.9	30	42.2	52.3	26.0
768LR _ 22 X 3/4	22	R-3/4	15.9	30	42.2	52.3	26.0
768LR _ 22 X 1	22	R-1	18.3	35	47.0	57.1	26.0
768LR _ 25 X 3/4	25	R-3/4	15.9	35	45.2	57.5	31.3
768LR _ 25 X 1	25	R-1	21.8	35	50.0	62.3	31.3

**Reference Specifications:**

DIN - ISO 2999  
BS - 21  
JIS - B0203  
ISO - 7/1-BSP-T

- 55° Thread angle
- Truncation of root and crest are round
- Taper angle 1°47'

**Designation:**  
Marking LR on Hex.

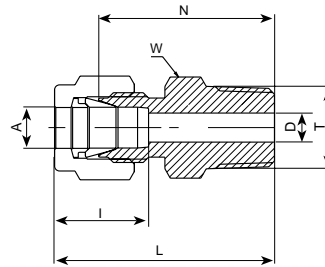


● "D" - Dimension is minimum opening. ● Dimensions are for reference only, and are subject to change without notice.

For inches, see next page

# LET-LOK TUBE FITTINGS

## 768 LR MALE CONNECTOR (Cont'd)



### TUBE (INCH) ISO TAPERED THREAD

Ordering Information	A Tube O.D.		T (ISO)	D		W Hex. Flat		N		L		I	
	in	mm		in	mm	in	mm	in	mm	in	mm	in	mm
	768LR SS 1/8 X 1/8	1/8		3.17	R-1/8	0.09	2.28	7/16	11.1	0.94	23.90	1.20	30.48
768LR SS 1/8 X 1/4	1/8	3.17	R-1/4	0.09	2.28	9/16	14.3	1.14	28.95	1.40	35.56	0.50	12.70
768LR SS 1/4 X 1/8	1/4	6.35	R-1/8	0.19	4.82	1/2	12.7	1.00	25.40	1.29	32.76	0.60	15.20
768LR SS 1/4 X 1/4	1/4	6.35	R-1/4	0.19	4.82	9/16	14.3	1.20	30.50	1.49	37.85	0.60	15.20
768LR SS 1/4 X 3/8	1/4	6.35	R-3/8	0.19	4.82	11/16	17.5	1.21	30.78	1.51	38.35	0.60	15.20
768LR SS 1/4 X 1/2	1/4	6.35	R-1/2	0.19	4.82	7/8	22.2	1.47	37.34	1.76	44.70	0.60	15.20
768LR SS 5/16 X 1/8	5/16	7.93	R-1/8	0.19	4.82	9/16	14.3	1.05	26.67	1.34	34.03	0.64	16.20
768LR SS 5/16 X 1/4	5/16	7.93	R-1/4	0.25	6.35	9/16	14.3	1.23	31.24	1.52	38.60	0.64	16.20
768LR SS 3/8 X 1/8	3/8	9.52	R-1/8	0.19	4.82	5/8	15.9	1.10	27.90	1.39	35.30	0.66	16.80
768LR SS 3/8 X 1/4	3/8	9.52	R-1/4	0.28	7.11	5/8	15.9	1.28	32.51	1.57	39.87	0.66	16.80
768LR SS 3/8 X 3/8	3/8	9.52	R-3/8	0.28	7.11	11/16	17.5	1.28	32.51	1.57	39.87	0.66	16.80
768LR SS 3/8 X 1/2	3/8	9.52	R-1/2	0.28	7.11	7/8	22.2	1.53	38.90	1.82	46.23	0.66	16.80
768LR SS 1/2 X 1/4	1/2	12.70	R-1/4	0.28	7.11	13/16	20.6	1.31	33.27	1.71	43.43	0.90	22.90
768LR SS 1/2 X 3/8	1/2	12.70	R-3/8	0.38	9.65	13/16	20.6	1.31	33.27	1.71	43.43	0.90	22.90
768LR SS 1/2 X 1/2	1/2	12.70	R-1/2	0.41	10.41	7/8	22.2	1.53	38.90	1.93	49.02	0.90	22.90
768LR SS 1/2 X 3/4	1/2	12.70	R-3/4	0.41	10.41	1 1/16	27.0	1.59	40.38	1.99	50.54	0.90	22.90
768LR SS 3/4 X 3/4	3/4	19.05	R-3/4	0.62	15.74	1 1/16	27.0	1.59	40.38	1.99	50.54	0.96	24.40
768LR SS 1 X 1	1	25.40	R-1	0.88	22.35	1 3/8	34.9	1.97	50.03	2.45	62.23	1.23	31.20

● "D" - Dimension is minimum opening. ● Dimensions are for reference only, and are subject to change without notice.