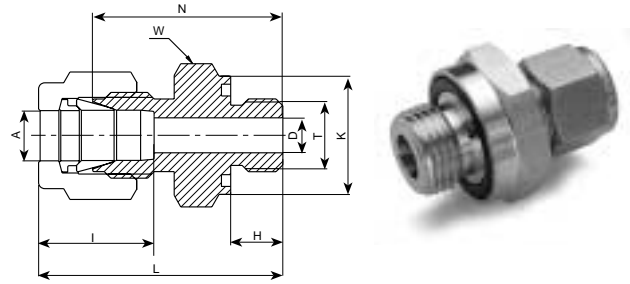
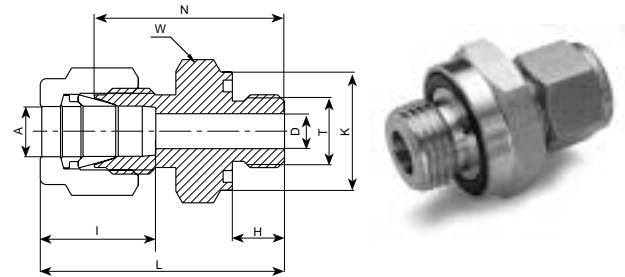


768 LOP  
MALE CONNECTOR



O-SEAL NPT TAPERED THREAD																		
Ordering Information	A		T	D		K		W		N		H		L		I		O-ring***
	Tube O.D.		(NPT) Short			Hex. Flat												
	in	mm	in	in	mm	in	mm	in	mm	in	mm	in	mm	in	mm	in	mm	
768LOP _ 1/8 X 1/8	1/8	3.17	1/8	.09	2.28	.74	18.79	3/4	19.1	1.03	26.16	.28	7.11	1.29	32.76	.50	12.70	-111
768LOP _ 1/4 X 1/8	1/4	6.35	1/8	.19	4.82	.74	18.79	3/4	19.1	1.09	27.70	.28	7.11	1.38	35.05	.60	15.24	-111
768LOP _ 1/4 X 1/4	1/4	6.35	1/4	.19	4.82	.93	23.62	15/16	23.8	1.22	31.00	.38	9.65	1.51	38.40	.60	15.24	-113
768LOP _ 3/8 X 1/4	3/8	9.52	1/4	.28	7.11	.93	23.62	15/16	23.8	1.28	32.51	.38	9.65	1.57	39.88	.66	16.76	-113
768LOP _ 3/8 X 3/8	3/8	9.52	3/8	.28	7.11	1.12	28.45	1 1/8	28.6	1.34	34.04	.41	10.41	1.63	41.40	.66	16.76	-116
768LOP _ 3/8 X 1/2	3/8	9.52	1/2	.28	7.11	1.30	33.02	1 5/16	33.3	1.56	39.62	.53	13.46	1.85	46.99	.66	16.76	-212
768LOP _ 1/2 X 1/2	1/2	12.70	1/2	.41	10.41	1.30	33.02	1 5/16	33.3	1.56	39.62	.53	13.46	1.96	49.78	.90	22.86	-212
																	<b>Designation:</b> Marking LOP on Hex.	

768 LO  
MALE CONNECTOR



O-SEAL MALE UNF THREAD																		
Ordering Information	A		T	D		K		W		N		H		L		I		O-ring***
	Tube O.D.		Straight Thread UNF			Hex. Flat												
	in	mm	in	in	mm	in	mm	in	mm	in	mm	in	mm	in	mm	in	mm	
768LO _ 1/16 X 5/16-24	1/16	1.58	5/16-24	.05	1.27	.55	14.0	9/16	14.3	.90	22.86	.34	8.63	1.05	26.67	.34	8.63	-011
768LO _ 1/8 X 5/16-24	1/8	3.17	5/16-24	.09	2.28	.55	14.0	9/16	14.3	1.03	26.20	.34	8.63	1.29	32.77	.50	12.70	-011
768LO _ 3/16 X 3/8-24	3/16	4.76	3/8-24	.12	3.04	.62	15.75	5/8	15.9	1.09	27.70	.38	9.65	1.35	34.29	.54	13.72	-012
768LO _ 1/4 X 7/16-20	1/4	6.35	7/16-20	.19	4.22	.74	18.80	3/4	19.1	1.22	31.00	.41	10.41	1.51	38.35	.60	15.24	-111
768LO _ 5/16 X 1/2-20	5/16	7.93	1/2-20	.25	6.35	.86	21.84	7/8	22.2	1.31	33.30	.44	11.17	1.60	40.64	.64	16.25	-112
768LO _ 3/8 X 9/16-18	3/8	9.52	9/16-18	.28	7.11	.93	23.62	15/16	23.8	1.38	35.05	.47	11.93	1.67	40.89	.66	16.76	-113
768LO _ 1/2 X 3/4-16	1/2	12.70	3/4-16	.41	10.41	1.12	28.45	1 1/8	28.6	1.41	35.81	.47	11.93	1.81	45.77	.90	22.86	-116
768LO _ 3/4 X 1 1/16-12	3/4	19.05	1 1/16-12	.62	15.74	1.49	37.85	1 1/2	38.1	1.66	42.20	.56	14.22	2.06	52.32	.96	24.38	-215
768LO _ 1 X 1 5/16-12	1	25.40	1 5/16-12	.88	22.35	1.74	44.20	1 3/4	44.5	1.81	45.97	.56	14.22	2.29	58.17	1.23	31.24	-219
																	<b>Designation:</b> Marking LO on Hex.	

● "D" - Dimension is minimum opening. ● Dimensions are for reference only, and are subject to change without notice.  
\*\*\* O-rings used are BUNA 70 Durometer.