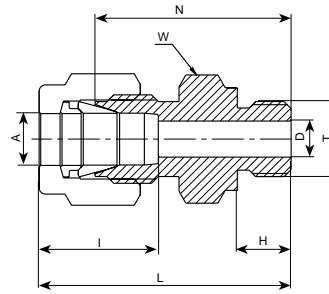


## 768 LOB MALE CONNECTOR



### SAE/MS STRAIGHT THREAD BOSS\*

Ordering Information	A		T	D		W		N		H		L		I		O-ring**
	Tube O.D.		Straight Thread UN			Hex. Flat										
	in	mm	in	in	mm	in	mm	in	mm	in	mm	in	mm	in	mm	
768LOB _ 1/8 X 5/16-24	1/8	3.17	5/16-24	.09	2.28	7/16	11.1	0.92	23.37	.30	7.62	1.18	29.97	0.50	12.7	-902
768LOB _ 1/4 X 7/16-20	1/4	6.35	7/16-20	.19	4.82	9/16	14.3	1.05	26.67	.36	9.14	1.34	34.03	0.60	15.2	-904
768LOB _ 1/4 X 9/16-18	1/4	6.35	9/16-18	.19	4.82	11/16	17.5	1.11	28.19	.39	9.90	1.40	35.56	0.60	15.2	-906
768LOB _ 1/4 X 3/4 -16	1/4	6.35	3/4 -16	.19	4.82	7/8	22.2	1.19	30.20	.44	11.17	1.48	37.59	0.60	15.2	-908
768LOB _ 1/4 X 7/8-14	1/4	6.35	7/8-14	.19	4.82	1	25.4	1.31	33.27	.50	12.70	1.60	40.64	0.60	15.2	-910
768LOB _ 5/16 X 1/2-20	5/16	7.93	1/2-20	.25	6.40	5/8	15.9	1.08	27.43	.36	9.14	1.37	34.80	0.64	16.2	-905
768LOB _ 3/8 X 7/16-20	3/8	9.52	7/16-20	.20	5.10	5/8	15.9	1.11	28.19	.36	9.14	1.40	35.56	0.66	16.8	-904
768LOB _ 3/8 X 9/16-18	3/8	9.52	9/16-18	.28	7.11	11/16	17.5	1.17	29.71	.39	9.90	1.46	37.02	0.66	16.8	-906
768LOB _ 3/8 X 3/4 -16	3/8	9.52	3/4 -16	.28	7.11	7/8	22.2	1.25	31.75	.44	11.17	1.54	39.11	0.66	16.8	-908
768LOB _ 3/8 X 7/8-14	3/8	9.52	7/8-14	.28	7.11	1	25.4	1.37	34.80	.50	12.70	1.66	42.16	0.66	16.8	-910
768LOB _ 1/2 X 9/16-18	1/2	12.70	9/16-18	.28	7.11	13/16	20.6	1.14	28.95	.39	9.90	1.54	39.11	0.90	22.9	-906
768LOB _ 1/2 X 3/4 -16	1/2	12.70	3/4 -16	.41	10.41	7/8	22.2	1.25	31.75	.44	11.17	1.65	41.91	0.90	22.9	-908
768LOB _ 1/2 X 7/8-14	1/2	12.70	7/8-14	.41	10.41	1	25.4	1.37	34.80	.50	12.70	1.77	44.96	0.90	22.9	-910
768LOB _ 1/2 X 1 1/16-12	1/2	12.70	1 1/16-12	.41	10.41	1 1/4	31.8	1.53	38.86	.59	14.98	1.93	49.02	0.90	22.9	-912
768LOB _ 5/8 X 3/4 -16	5/8	15.87	3/4 -16	.42	10.66	15/16	23.8	1.25	31.75	.44	11.17	1.65	41.91	0.96	22.4	-908
768LOB _ 5/8 X 7/8 -14	5/8	15.87	7/8 -14	.50	12.70	1	25.4	1.38	35.05	.50	12.70	1.78	45.21	0.96	22.4	-910
768LOB _ 3/4 X 3/4 -16	3/4	19.05	3/4 -16	.42	10.66	1 1/16	27.0	1.41	35.81	.44	11.17	1.81	46.0	0.96	22.4	-908
768LOB _ 3/4 X 1 1/16 -12	3/4	19.05	1 1/16 -12	.62	15.74	1 1/4	31.8	1.53	38.86	.59	14.98	1.93	49.02	0.96	22.4	-912
768LOB _ 7/8 X 1 3/16 -12	7/8	22.22	1 3/16 -12	.72	18.29	1 3/8	34.9	1.53	38.86	.59	14.98	1.93	49.02	1.02	25.9	-914
768LOB _ 1 X 1 1/16 -12	1	25.40	1 1/16 -12	.66	16.76	1 3/8	34.9	1.62	41.20	.59	14.98	2.10	53.34	1.23	31.2	-912
768LOB _ 1 X 1 5/16 -12	1	25.40	1 5/16 -12	.88	22.35	1 1/2	38.1	1.66	42.16	.59	14.98	2.14	54.35	1.23	31.2	-916

**Designation:**  
Marking LOB on Hex.

● "D" - Dimension is minimum opening. ● Dimensions are for reference only, and are subject to change without notice.

\* Per SAE J1926 and MS 16142. See page 65 for mounting dimensions.

\*\* O-rings used are Viton 90 Durometer. Other O-ring materials are available on request. For more technical information, see page 65.