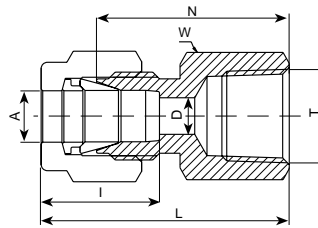


## 766 L FEMALE CONNECTOR

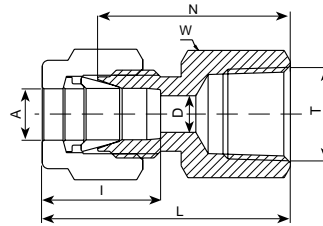


TUBE (METRIC) TO FEMALE NPT THREAD							
Ordering Information	A	T	D	W	N	L	I
	Tube O.D. mm	(NPT) in	mm	Hex. Flat mm	mm	mm	mm
766L_ 3 X 1/8	3	1/8	2.4	14	22.1	28.7	12.7
766L_ 3 X 1/4	3	1/4	2.4	19	26.9	33.5	12.7
766L_ 4 X 1/8	4	1/8	2.4	14	23.1	29.7	13.7
766L_ 6 X 1/8	6	1/8	4.8	14	23.9	31.3	15.3
766L_ 6 X 1/4	6	1/4	4.8	19	28.4	35.8	15.3
766L_ 6 X 3/8	6	3/8	4.8	22	30.2	37.6	15.3
766L_ 6 X 1/2	6	1/2	4.8	27	35.1	42.5	15.3
766L_ 8 X 1/8	8	1/8	6.4	15	24.6	32.1	16.2
766L_ 8 X 1/4	8	1/4	6.4	19	29.5	37.0	16.2
766L_ 8 X 3/8	8	3/8	6.4	22	31.0	38.5	16.2
766L_ 8 X 1/2	8	1/2	6.4	27	35.8	43.3	16.2
766L_ 10 X 1/4	10	1/4	7.9	19	30.2	37.8	17.2
766L_ 10 X 3/8	10	3/8	7.9	22	31.8	39.4	17.2
766L_ 10 X 1/2	10	1/2	7.9	27	36.6	44.2	17.2
766L_ 12 X 1/4	12	1/4	9.5	22	30.2	40.3	22.8
766L_ 12 X 3/8	12	3/8	9.5	22	31.8	41.9	22.8
766L_ 12 X 1/2	12	1/2	9.5	27	36.6	46.7	22.8
766L_ 15 X 1/2	15	1/2	11.9	27	36.6	46.7	24.4
766L_ 16 X 1/2	16	1/2	12.7	27	36.8	46.9	24.4
766L_ 20 X 1/2	20	1/2	15.9	30	37.8	47.9	26.0
766L_ 20 X 3/4	20	3/4	15.9	35	39.6	49.7	26.0
766L_ 22 X 3/4	22	3/4	18.3	35	39.6	49.7	26.0
766L_ 22 X 1	22	1	18.3	41	47.8	57.9	26.0
766L_ 25 X 3/4	25	3/4	21.8	35	41.1	53.4	31.3
766L_ 25 X 1	25	1	21.8	41	50.0	62.3	31.3

● "D" - Dimension is minimum opening. ● Dimensions are for reference only, and are subject to change without notice.

For inches, see next page

766 L  
FEMALE CONNECTOR (Cont'd)



TUBE (INCH) TO FEMALE NPT THREAD

Ordering Information	A Tube O.D.		T (NPT)	D		W Hex Flat		N		L		I	
	in	mm	in	in	mm	in	mm	in	mm	in	mm	in	mm
	766L _ 1/8 X 1/8	1/8	3.17	1/8	.09	2.28	9/16	14.3	.87	22.10	1.13	28.70	.50
766L _ 1/8 X 1/4	1/8	3.17	1/4	.09	2.28	3/4	19.1	1.06	26.92	1.32	33.52	.50	12.7
766L _ 3/16 X 1/8	3/16	4.76	1/8	.12	3.04	9/16	14.3	.91	23.11	1.17	29.71	.54	13.7
766L _ 1/4 X 1/8	1/4	6.35	1/8	.19	4.82	9/16	14.3	.94	23.87	1.23	31.24	.60	15.2
766L _ 1/4 X 1/4	1/4	6.35	1/4	.19	4.82	3/4	19.1	1.12	28.44	1.41	35.81	.60	15.2
766L _ 1/4 X 3/8	1/4	6.35	3/8	.19	4.82	7/8	22.2	1.19	30.22	1.48	37.59	.60	15.2
766L _ 1/4 X 1/2	1/4	6.35	1/2	.19	4.82	1 1/16	27.0	1.38	35.0	1.67	42.42	.60	15.2
766L _ 5/16 X 1/8	5/16	7.93	1/8	.25	6.35	9/16	14.3	.97	24.63	1.26	32.00	.64	16.3
766L _ 5/16 X 1/4	5/16	7.93	1/4	.25	6.35	3/4	19.1	1.16	29.46	1.45	36.83	.64	16.3
766L _ 3/8 X 1/8	3/8	9.52	1/8	.28	7.11	5/8	15.9	1.00	25.40	1.29	32.76	.66	16.8
766L _ 3/8 X 1/4	3/8	9.52	1/4	.28	7.11	3/4	19.1	1.19	30.22	1.48	37.59	.66	16.8
766L _ 3/8 X 3/8	3/8	9.52	3/8	.28	7.11	7/8	22.2	1.25	31.75	1.54	39.11	.66	16.8
766L _ 3/8 X 1/2	3/8	9.52	1/2	.28	7.11	1 1/16	27.0	1.44	36.57	1.73	43.94	.66	16.8
766L _ 1/2 X 1/4	1/2	12.70	1/4	.41	10.41	13/16	20.6	1.19	30.2	1.59	40.38	.90	22.9
766L _ 1/2 X 3/8	1/2	12.70	3/8	.41	10.41	7/8	22.2	1.25	31.75	1.65	41.91	.90	22.9
766L _ 1/2 X 1/2	1/2	12.70	1/2	.41	10.41	1 1/16	27.0	1.44	36.57	1.84	46.73	.90	22.9
766L _ 1/2 X 3/4	1/2	12.70	3/4	.41	10.41	1 5/16	33.3	1.50	38.10	1.90	48.26	.90	22.9
766L _ 5/8 X 3/8	5/8	15.87	3/8	.50	12.70	15/16	23.8	1.25	31.75	1.65	41.91	.90	24.4
766L _ 5/8 X 1/2	5/8	15.87	1/2	.50	12.70	1 1/16	27.0	1.44	36.57	1.84	46.73	.86	24.4
766L _ 3/4 X 1/2	3/4	19.05	1/2	.62	15.74	1 1/16	27.0	1.44	36.57	1.84	46.73	.86	24.4
766L _ 3/4 X 3/4	3/4	19.05	3/4	.62	15.74	1 5/16	33.3	1.50	38.10	1.90	48.26	.86	24.4
766L _ 7/8 X 3/4	7/8	22.22	3/4	.72	18.28	1 5/16	33.3	1.56	39.62	1.96	49.78	1.02	25.9
766L _ 1 X 3/4	1	25.40	3/4	.88	22.35	1 3/8	34.9	1.62	41.14	2.10	53.34	1.23	31.2
766L _ 1 X 1	1	25.40	1	.88	22.35	1 5/8	41.3	1.97	50.03	2.45	62.23	1.23	31.2

● "D" - Dimension is minimum opening. ● Dimensions are for reference only, and are subject to change without notice.