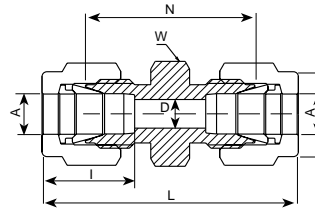


762 L  
UNION



TUBE (METRIC) TO TUBE (METRIC)												
Ordering Information	A Tube O.D.		D		W Hex. Flat		N		L		I	
	mm	mm	mm	mm	mm	mm	mm	mm	mm	mm	mm	mm
762L_2	2		1.7		12		22.4		35.6		12.9	
762L_3	3		2.4		12		22.1		35.3		12.9	
762L_4	4		2.4		12		24.1		37.3		13.7	
762L_6	6		4.8		14		26.2		41.0		15.3	
762L_8	8		6.4		15		28.2		43.2		16.2	
762L_10	10		7.9		18		31.0		46.2		17.2	
762L_12	12		9.5		22		31.0		51.2		22.8	
762L_14	14		11.1		24		31.8		52.0		22.8	
762L_15	15		11.9		24		31.8		52.0		24.4	
762L_16	16		12.7		24		31.8		52.0		24.4	
762L_18	18		15.1		27		33.3		53.5		24.4	
762L_20	20		15.9		30		34.8		55.0		26.0	
762L_22	22		18.3		30		34.8		55.0		26.0	
762L_25	25		21.8		35		40.4		65.0		31.3	
TUBE (INCH) TO TUBE (INCH)												
Ordering Information	A Tube O.D.		D		W Hex. Flat		N		L		I	
	in	mm	in	mm	in	mm	in	mm	in	mm	in	mm
762L_1/16	1/16	1.58	.05	1.27	5/16	7.9	.69	17.52	.99	25.14	.34	8.6
762L_1/8	1/8	3.17	.09	2.28	7/16	11.1	.88	22.35	1.40	35.56	.50	12.7
762L_3/16	3/16	4.76	.12	3.04	7/16	11.1	.95	24.13	1.47	37.33	.54	13.7
762L_1/4	1/4	6.35	.19	4.82	1/2	12.7	1.03	26.16	1.61	40.89	.60	15.2
762L_5/16	5/16	7.93	.25	6.35	9/16	14.3	1.11	28.2	1.69	42.9	.64	16.3
762L_3/8	3/8	9.52	.28	7.11	5/8	15.9	1.19	30.22	1.77	44.95	.66	16.8
762L_1/2	1/2	12.70	.41	10.41	13/16	20.6	1.22	30.98	2.02	51.30	.90	22.9
762L_5/8	5/8	15.87	.50	12.70	15/16	23.8	1.25	31.75	2.05	52.07	.96	24.4
762L_3/4	3/4	19.05	.62	15.74	1 1/16	27.0	1.31	33.27	2.11	53.59	.96	24.4
762L_7/8	7/8	22.22	.72	18.28	1 3/16	30.2	1.38	35.05	2.17	55.11	1.02	26.0
762L_1	1	25.40	.88	22.35	1 3/8	34.9	1.59	40.38	2.55	64.77	1.23	31.3
762L_1 1/4	*1 1/4	31.75	1.09	27.70	1 3/4	44.5	1.89	48.00	3.63	92.20	1.62	41.2
762L_1 1/2	*1 1/2	38.1	1.34	34.00	2 1/8	54.0	2.11	53.60	4.25	107.95	1.97	50.0

\* Including low friction paste, See page 12 ● "D" - Dimension is minimum opening. ● Dimensions are for reference only, and are subject to change without notice.