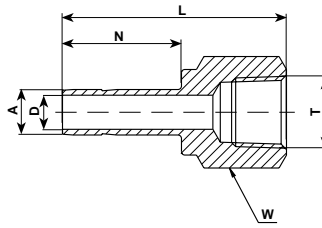


739 LF  
**FEMALE ADAPTER  
 TUBE TO PIPE**



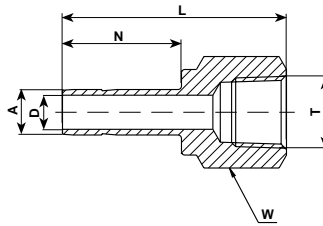
**TUBE (METRIC) FEMALE PIPE**

Ordering Information	A	T	D	W	N	L
	Tube O.D.	(NPT)		Hex.Flat		
	mm	in	mm	mm	mm	mm
739LF _ 3 X 1/8	3	1/8	2.1	14	13.5	31.5
739LF _ 3 X 1/4	3	1/4	2.1	19	13.5	35.3
739LF _ 4 X 1/4	4	1/4	2.2	19	14.2	35.0
739LF _ 6 X 1/8	6	1/8	4.0	14	15.7	32.5
739LF _ 6 X 1/4	6	1/4	4.0	19	15.7	36.5
739LF _ 6 X 3/8	6	3/8	4.0	22	15.7	39.6
739LF _ 6 X 1/2	6	1/2	4.0	27	15.7	45.5
739LF _ 8 X 1/8	8	1/8	5.6	14	16.8	34.3
739LF _ 8 X 1/4	8	1/4	5.6	19	16.8	37.6
739LF _ 8 X 1/2	8	1/2	5.6	27	16.8	46.0
739LF _ 10 X 1/4	10	1/4	7.7	19	17.5	38.1
739LF _ 10 X 3/8	10	3/8	7.7	22	17.5	40.1
739LF _ 10 X 1/2	10	1/2	7.7	27	17.5	46.5
739LF _ 12 X 1/4	12	1/4	9.1	19	23.1	43.4
739LF _ 12 X 3/8	12	3/8	9.1	22	23.1	45.5
739LF _ 12 X 1/2	12	1/2	9.1	27	23.1	52.3
739LF _ 16 X 3/8	16	3/8	12.7	24	24.7	48.0
739LF _ 16 X 1/2	16	1/2	12.7	27	24.7	53.1
739LF _ 20 X 1/2	20	1/2	15.1	27	26.6	56.0
739LF _ 20 X 3/4	20	3/4	15.1	35	26.6	56.0

● "D" - Dimension is minimum opening. ● Dimensions are for reference only, and are subject to change without notice.

For inches, see next page

739 LF  
**FEMALE ADAPTER** (Cont'd)  
**TUBE TO PIPE**



**TUBE (INCH) FEMALE PIPE**

Ordering Information	A Tube O.D.		T (NPT)	D		W Hex. Flat		N		L	
	in	mm	in	in	mm	in	mm	in	mm	in	mm
	739LF _ 1/8 X 1/8	1/8	3.17	1/8	.08	2.3	9/16	14.3	.53	13.45	1.24
739LF _ 1/8 X 1/4	1/8	3.17	1/4	.08	2.3	3/4	19.1	.53	13.45	1.39	35.3
739LF _ 3/16 X 1/4	3/16	4.76	1/4	.12	3.0	3/4	19.1	.56	14.20	1.41	35.8
739LF _ 1/4 X 1/8	1/4	6.35	1/8	.17	4.2	9/16	14.3	.62	15.75	1.30	33.0
739LF _ 1/4 X 1/4	1/4	6.35	1/4	.17	4.2	3/4	19.1	.62	15.75	1.46	37.1
739LF _ 1/4 X 3/8	1/4	6.35	3/8	.17	4.2	7/8	22.2	.62	15.75	1.55	39.4
739LF _ 1/4 X 1/2	1/4	6.35	1/2	.17	4.2	1 1/16	27.0	.62	15.75	1.79	45.5
739LF _ 5/16 X 1/4	5/16	7.93	1/4	.24	6.0	3/4	19.1	.66	16.75	1.48	37.6
739LF _ 3/8 X 1/8	3/8	9.52	1/8	.28	7.1	9/16	14.3	.69	17.50	1.35	34.3
739LF _ 3/8 X 1/4	3/8	9.52	1/4	.28	7.1	3/4	19.1	.69	17.50	1.50	38.1
739LF _ 3/8 X 3/8	3/8	9.52	3/8	.28	7.1	7/8	22.2	.69	17.50	1.59	40.4
739LF _ 3/8 X 1/2	3/8	9.52	1/2	.28	7.1	1 1/16	27.0	.69	17.50	1.84	46.7
739LF _ 1/2 X 1/4	1/2	12.70	1/4	.39	9.9	3/4	19.1	.91	23.10	1.71	43.4
739LF _ 1/2 X 3/8	1/2	12.70	3/8	.39	9.9	7/8	22.2	.91	23.10	1.79	45.5
739LF _ 1/2 X 1/2	1/2	12.70	1/2	.39	9.9	1 1/16	27.0	.91	23.10	2.04	51.8
739LF _ 5/8 X 1/2	5/8	15.87	1/2	.50	12.7	1 1/16	27.0	.97	24.65	2.09	53.1
739LF _ 3/4 X 1/2	3/4	19.05	1/2	.59	15.0	1 1/16	27.0	.97	24.65	2.08	52.8
739LF _ 3/4 X 3/4	3/4	19.05	3/4	.59	15.0	1 5/16	33.3	.97	24.65	2.16	54.9
739LF _ 3/4 X 1	3/4	19.05	1	.59	15.0	1 5/8	41.3	.97	24.65	2.30	58.4
739LF _ 1 X 3/4	1	25.40	3/4	.80	20.3	1 5/16	33.3	1.23	31.20	2.39	60.7
739LF _ 1 X 1	1	25.40	1	.80	20.3	1 5/8	41.3	1.23	31.20	2.53	64.3

● "D" - Dimension is minimum opening. ● Dimensions are for reference only, and are subject to change without notice.