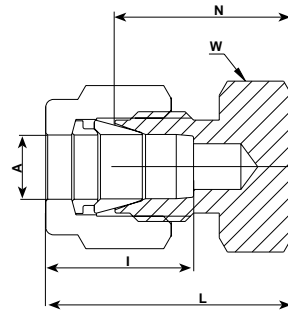


7108 L  
CAP



**CAPPING END OF TUBE (METRIC)**

Ordering Information	A		W		N		L		I	
	Tube O.D.		Hex. Flat							
	mm	mm	mm	mm	mm	mm	mm	mm	mm	mm
7108L_2	2		12		13.5		20.1		12.9	
7108L_3	3		12		13.5		20.1		12.9	
7108L_4	4		12		14.7		21.3		13.7	
7108L_6	6		14		15.7		23.1		15.3	
7108L_8	8		15		17.0		24.5		16.2	
7108L_10	10		18		15.0		26.6		17.2	
7108L_12	12		22		19.0		29.1		22.8	
7108L_15	15		24		19.8		29.9		24.4	
7108L_16	16		24		19.8		29.9		24.4	
7108L_18	18		27		21.3		31.4		24.4	
7108L_20	20		30		23.9		34.0		26.0	
7108L_22	22		30		23.9		34.0		26.0	
7108L_25	25		35		26.2		38.5		31.3	

**CAPPING END OF TUBE (INCH)**

Ordering Information	A		W		N		L		I	
	Tube O.D.		Hex. Flat							
	in	mm	in	mm	in	mm	in	mm	in	mm
7108L_1/16	1/16	1.58	5/16	7.9	.44	11.17	.59	14.98	.34	8.6
7108L_1/8	1/8	3.17	7/16	11.1	.53	13.46	.79	20.06	.50	12.7
7108L_3/16	3/16	4.76	7/16	11.1	.58	14.73	.84	21.84	.54	13.7
7108L_1/4	1/4	6.35	1/2	12.7	.63	16.00	.92	23.37	.60	15.2
7108L_5/16	5/16	7.93	9/16	14.3	.67	17.01	.96	24.38	.64	16.2
7108L_3/8	3/8	9.52	5/8	15.9	.72	18.28	1.01	26.65	.66	16.2
7108L_1/2	1/2	12.70	13/16	20.6	.75	19.05	1.15	29.21	.90	16.8
7108L_5/8	5/8	15.87	15/16	23.8	.78	19.81	1.18	29.97	.96	22.9
7108L_3/4	3/4	19.05	1 1/16	27.0	.84	21.33	1.24	31.49	.96	24.4
7108L_7/8	7/8	22.22	1 3/16	30.2	.94	23.88	1.34	34.04	1.02	25.9
7108L_1	1	25.40	1 3/8	34.9	1.03	26.16	1.51	38.35	1.23	31.2

● "D" - Dimension is minimum opening. ● Dimensions are for reference only, and are subject to change without notice.